

TTED

IN DECK

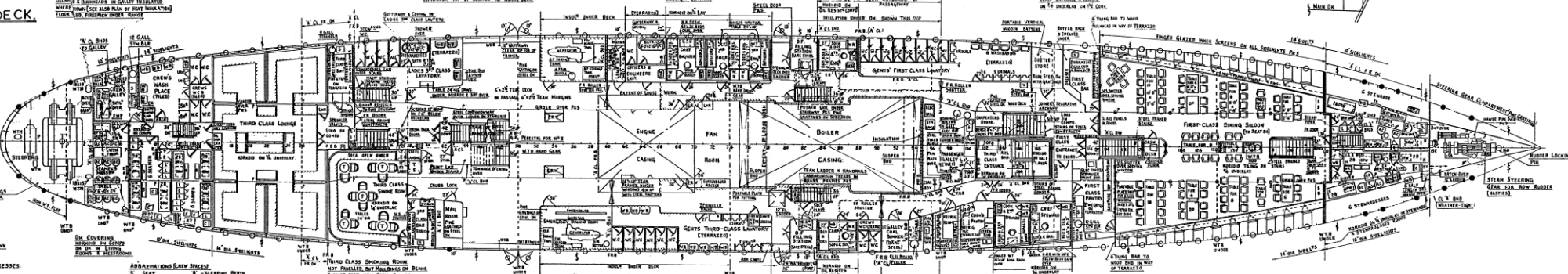
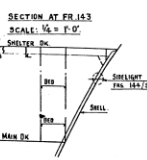
CK

ECK

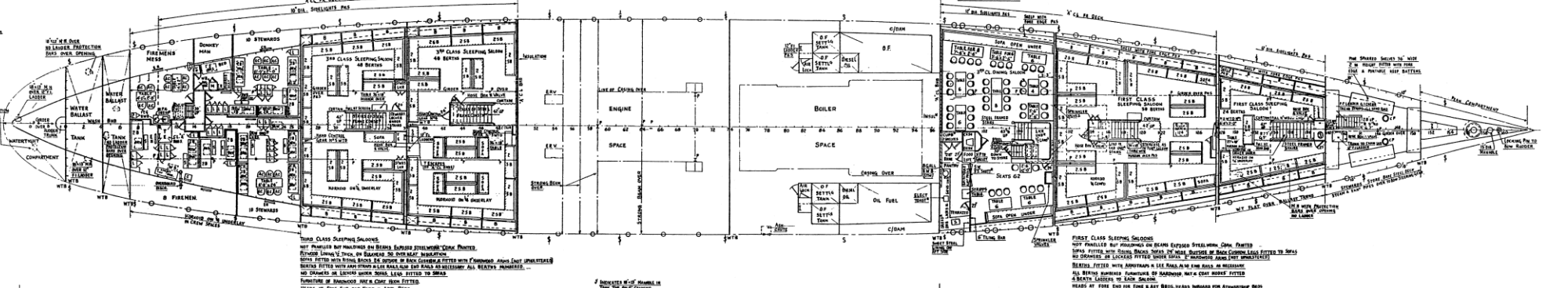
THIRD CLASS SLEEPING
 THIRD CLASS SLEEPING ROOMS IN LIT. BASE
 CEILING LIT. BASE WITH MOUNTING OF BEAM
 BOWSE STEERING GEAR, PARTIAL
 SPOAS. AT END OF DECK, BACK COINERS
 FITTED WITH 1/2" BRASS WIRE MESH
 FITTED TO BEARDS IN LOCKERS UNDER SPOAS
 LIT. BASE FITTED TO BEARDS
 FITTURES OF MOUNTING
 DAY & NIGHT ROOM FITTER

INDICATES 1/4" BY 3/8" BOWHOLE'S 2" STEEL
 BEAM TO 1/4" BEAM SPOAS. BECK BEAM.
 INDICATES BOWHOLE'S BEAMS FITTING FROM
 BEAMS, BEAM IN DIMENSION OF SPOAS DECK BEAM.
 PREPARABLE SHUTTING BOARDS ARRANGED IN
 CHANNELS TOP OF BEAMS OF ABOVE DECK.

ENGINEERS, CAPTAINS, CHIEF & SECOND STEWARDS, & COOKS. ACCOMMODATION
 WALLS FINISHED IN BRASSWOOD, COINERS DONE WITH BRASSWOOD IN BEAMS
 SPRING MATTRESSES ON BEAMS & SPOAS 1/4" WIDE WHERE POSSIBLE
 BOWSE'S OVER MESH ABOVE SPOAS & WIRE MESH FROM COINERS TO BECK BEAM
 LITESTL STORAGE OF TOP OF MARRONAGE FURNITURE OF BRASSWOOD
 WIRE FITS & MOUNTING FROM COINERS TO ENGINE ROOMS 4" x 4" BRASS COINERS
 DIMENSION BRASSWOOD IN COINERS 1/4" x 4" x 4" SPOAS
 COINERS FITTER



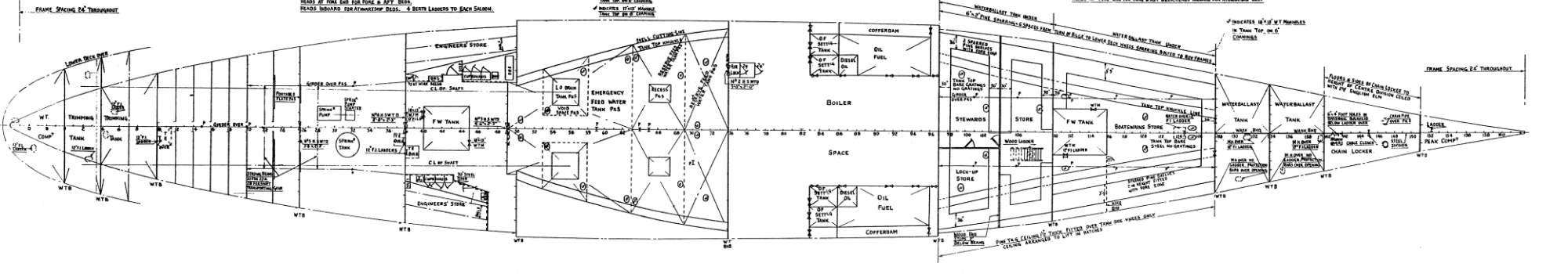
- NECESSARY WHERE SHOWN
 H. BEAMS OF MATTRESSES 3" FROM
- | ATTENDANTS CREW SPACES | |
|------------------------|--------------------|
| 1. SEAT | 2. SLEEPING BERTHS |
| 3. LOCKERS | 4. TABLES |
| 5. ELECTRIC HEATER | 6. CASES |
| 7. W.C. | 8. BENCHES |
| 9. SINK | 10. CROCK |
| 11. SHOWER TUBS | 12. MESS TABLE |
- THIRD CLASS SLEEPING ROOMS
 WITH FINISHED BRASSWOOD COINERS
 CEILING LIT. BASE WITH MOUNTING OF BEAM
 BOWSE STEERING GEAR, PARTIAL
 SPOAS. AT END OF DECK, BACK COINERS
 FITTED WITH 1/2" BRASS WIRE MESH
 FITTED TO BEARDS IN LOCKERS UNDER SPOAS
 LIT. BASE FITTED TO BEARDS
 FITTURES OF MOUNTING
 DAY & NIGHT ROOM FITTER



- THIRD CLASS SLEEPING ROOMS
 WITH FINISHED BRASSWOOD COINERS
 CEILING LIT. BASE WITH MOUNTING OF BEAM
 BOWSE STEERING GEAR, PARTIAL
 SPOAS. AT END OF DECK, BACK COINERS
 FITTED WITH 1/2" BRASS WIRE MESH
 FITTED TO BEARDS IN LOCKERS UNDER SPOAS
 LIT. BASE FITTED TO BEARDS
 FITTURES OF MOUNTING
 DAY & NIGHT ROOM FITTER

INDICATES 1/4" BY 3/8" BOWHOLE'S 2" STEEL
 BEAM TO 1/4" BEAM SPOAS. BECK BEAM.
 INDICATES BOWHOLE'S BEAMS FITTING FROM
 BEAMS, BEAM IN DIMENSION OF SPOAS DECK BEAM.
 PREPARABLE SHUTTING BOARDS ARRANGED IN
 CHANNELS TOP OF BEAMS OF ABOVE DECK.

INDICATES 1/4" BY 3/8" BOWHOLE'S 2" STEEL
 BEAM TO 1/4" BEAM SPOAS. BECK BEAM.
 INDICATES BOWHOLE'S BEAMS FITTING FROM
 BEAMS, BEAM IN DIMENSION OF SPOAS DECK BEAM.
 PREPARABLE SHUTTING BOARDS ARRANGED IN
 CHANNELS TOP OF BEAMS OF ABOVE DECK.



- INDICATES 1/4" BY 3/8" BOWHOLE'S 2" STEEL
 BEAM TO 1/4" BEAM SPOAS. BECK BEAM.
 INDICATES BOWHOLE'S BEAMS FITTING FROM
 BEAMS, BEAM IN DIMENSION OF SPOAS DECK BEAM.
 PREPARABLE SHUTTING BOARDS ARRANGED IN
 CHANNELS TOP OF BEAMS OF ABOVE DECK.

INDICATES 1/4" BY 3/8" BOWHOLE'S 2" STEEL
 BEAM TO 1/4" BEAM SPOAS. BECK BEAM.
 INDICATES BOWHOLE'S BEAMS FITTING FROM
 BEAMS, BEAM IN DIMENSION OF SPOAS DECK BEAM.
 PREPARABLE SHUTTING BOARDS ARRANGED IN
 CHANNELS TOP OF BEAMS OF ABOVE DECK.

- INDICATES 1/4" BY 3/8" BOWHOLE'S 2" STEEL
 BEAM TO 1/4" BEAM SPOAS. BECK BEAM.
 INDICATES BOWHOLE'S BEAMS FITTING FROM
 BEAMS, BEAM IN DIMENSION OF SPOAS DECK BEAM.
 PREPARABLE SHUTTING BOARDS ARRANGED IN
 CHANNELS TOP OF BEAMS OF ABOVE DECK.